



INSTRUCTION BULLETIN

No. 340771
Machine: ATLV 4300
Published: 04-2008
Rev. 01

NOTE: DO NOT DISCARD the Parts List from the Instruction Bulletin. Place the Parts List in the appropriate place in the machine manual for future reference. Retaining the Parts List will make it easier to reorder individual parts and will save the cost of ordering an entire kit.

NOTE: Numbers in parenthesis () are reference numbers for parts listed in Bill of Materials.

Installation instructions for **kit number 368533 (000000-001824) and 372855 (001825 and above)**

SYNOPSIS:

This kit contains the parts needed to replace the stop solenoid on ATLV 4300 machines.
Please follow step-by-step instructions.

SPECIAL TOOLS / CONSIDERATIONS: NONE

(Estimated time to complete: 1 hour)

PREPARATION: (All Machines)

1. Park the machine on a clean level surface, turn off the machine, remove the key, and set the parking brake.

FOR SAFETY: Before leaving or servicing machine, stop on level surface, set parking brake, turn off machine, and remove key.

2. Disconnect the battery cables from the batteries.



WARNING: Always disconnect battery cables from machine before working on electrical components.

3. Open the engine cover and lock cover into place.
4. Open and lower the rear debris hopper. Empty the rear debris hopper.
5. Remove the rear fire wall from the machine. Set the firewall and mounting hardware aside.

INSTALLATION: (Machines 000000- 001824) Stop Kit, Stop, Solenoid, CI-368533

1. Disconnect the stop solenoid wire harness from the main harness. Remove the stop solenoid assembly from the machine. Refer to Fig. 1 and Fig. 2.
2. Cut the white connector and harness from the stop solenoid removed in the previous step. Save the white connector and harness. Discard the stop solenoid.

3. Install the replacement stop solenoid (1) onto the fuel injection pump where the old stop solenoid was previously installed. Refer to Fig. 1 and Fig. 2.
4. Remove the HD yellow wire and terminal from the main wire harness connector. Tape off the end of the yellow wire.
5. Insert the brass terminal end of the jumper wire (3) into the slot where the yellow wire was previously connected.
6. Route jumper wire (3) and connect it to the white pig tail on the starter motor.
7. Use cable ties (4) to secure the wire away from the exhaust system and fuel lines.

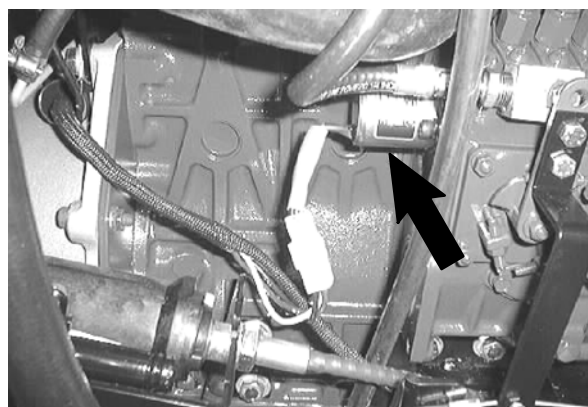


FIG. 1

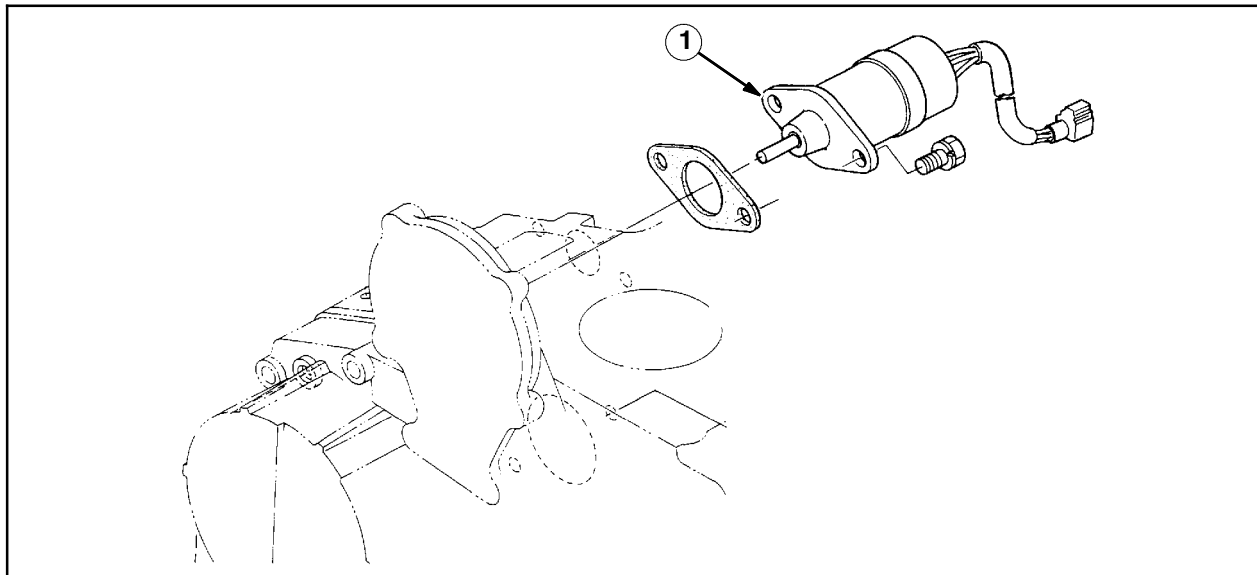


FIG. 2

8. Remove the black wire from the white connector. The black wire is no longer needed since the new stop solenoid is internally grounded. Refer to Fig. 3.
9. Install the stop solenoid connector (2) onto the wires from the white connector. Since the circuit polarity is sensitive, be sure to install the stop solenoid connector exactly as shown. Refer to Fig. 3.
10. Plug the harness from the previous several steps into the machine wire harness and the stop solenoid (1).
11. Reinstall the firewall onto the machine.
12. Reconnect the battery cables to the batteries.
13. Start and test machine.

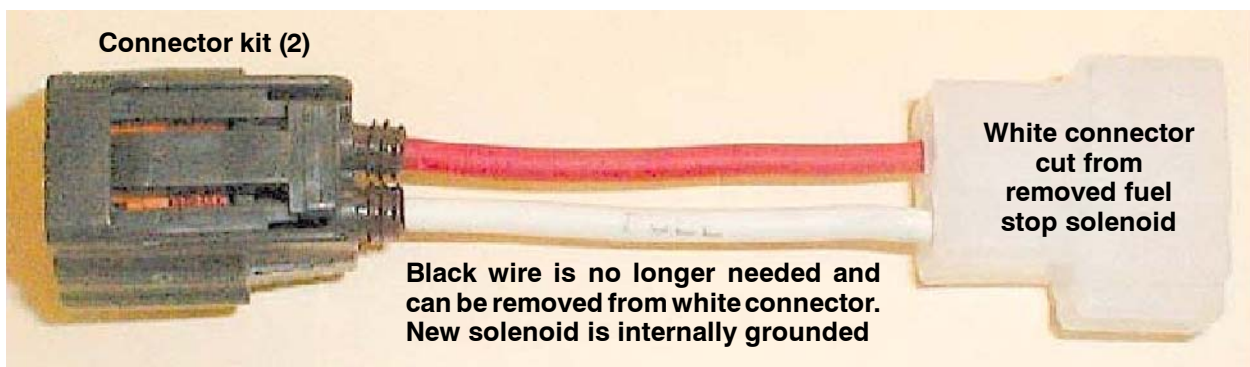


FIG. 3

**INSTALLATION: (Machines 001825 and above)
Solenoid Kit, Stop, Eng, Dsl, Replmt-372855**

1. Disconnect the connector from the existing stop solenoid from the main wire harness.
2. Remove the existing stop solenoid from the fuel injection pump. Refer to Fig. 4.

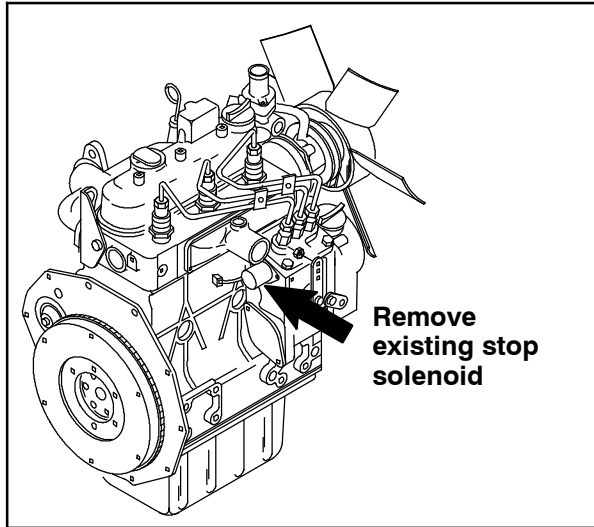


FIG. 4

3. Install the replacement stop solenoid (1) onto the fuel injection pump where the old stop solenoid was previously installed. Refer to Fig. 5.

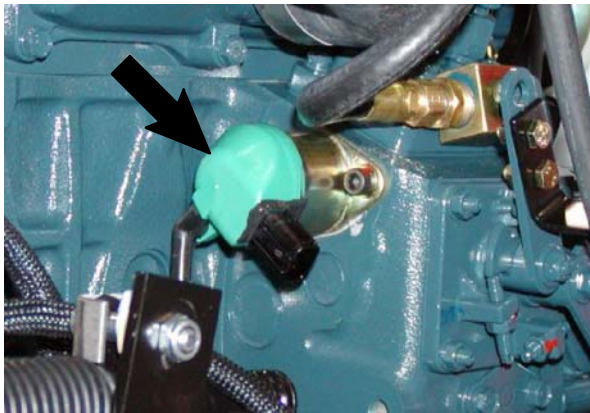


FIG. 5

4. Cut the white connector and harness from the existing stop solenoid previously removed from the machine. Discard the old stop solenoid just removed from the machine.
5. Remove the black wire from the white connector. The black wire is no longer needed since the new stop solenoid is internally grounded. Refer to Fig. 6.
6. Install the stop solenoid connector (2) onto the wires from the white connector. Since the circuit polarity is sensitive, be sure to install the stop solenoid connector exactly as shown. Refer to Fig. 6.
7. Plug the harness from the previous several steps into the wire harness and the stop solenoid (1).
8. Reinstall the firewall onto the machine.
9. Reconnect the battery cables to the batteries.
10. Start and test machine.

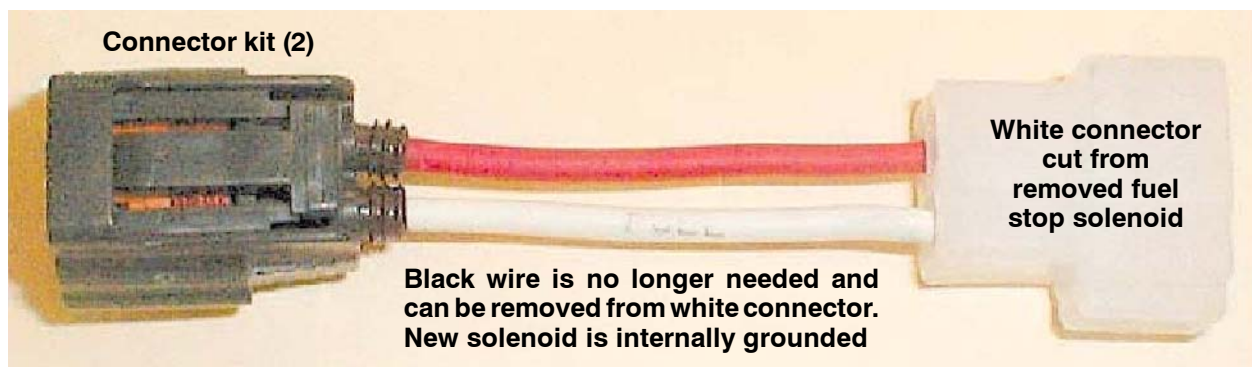


FIG. 6

Bill of Materials for Stop Kit, Stop, Solenoid, CI [ATLV 4300]-368533 (machines 000000-001824)

	Ref.	Tennant Part No.	Description	Qty.
▽		368533	Stop Kit, Stop, Solenoid, CI [ATLV 4300]	1
▲	1	374269	Solenoid, Stop, Eng, Dsl, 12VDC, [KU]	1
▲	2	372856	Connector Kit, Stop Solenoid, Eng	1
▲	3	398507	Wire, 14Ga White .25Blade / .25Receptacle	1
▲	4	49266	Tie, Cable, Nyl, 07..3L .19W 1.8 Max D	3

Bill of Materials for Solenoid Kit, Stop, Eng, Dsl, Replmt-372855 (machines 001825 and above)

	Ref.	Tennant Part No.	Description	Qty.
▽		372855	Solenoid Kit, Stop, Eng, Dsl, Replmt	1
▲	1	374269	Solenoid, Stop, Eng, Dsl, 12VDC, [KU]	1
▲	2	372856	Connector Kit, Stop Solenoid, Eng	1

TENNANT COMPANY
P. O. Box 1452
Minneapolis, MN 55440-1452